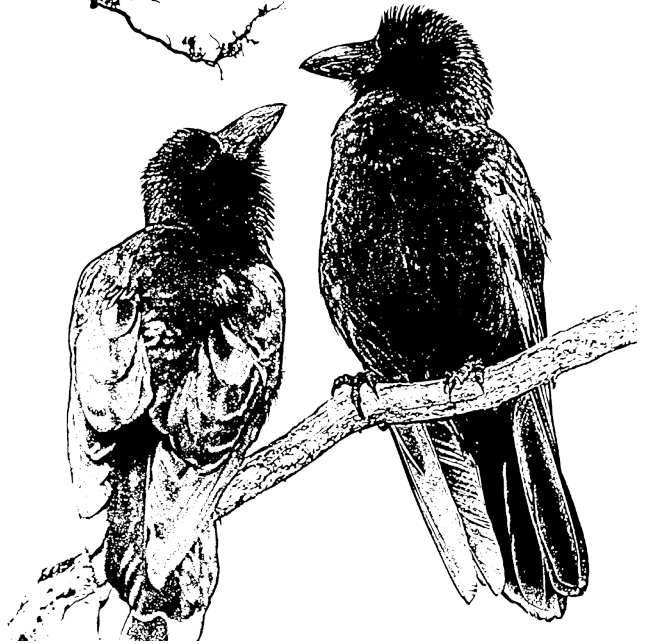
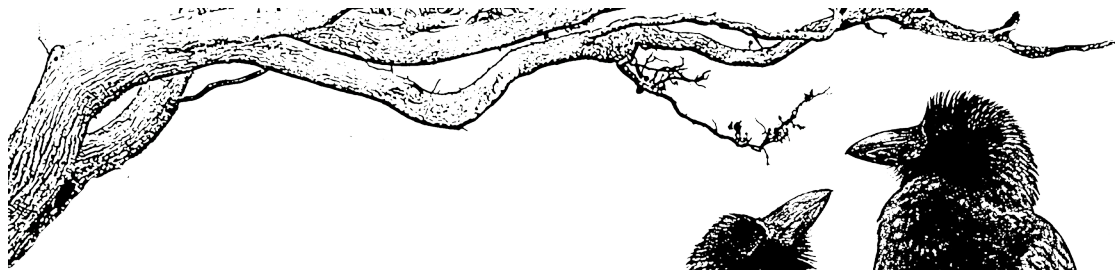


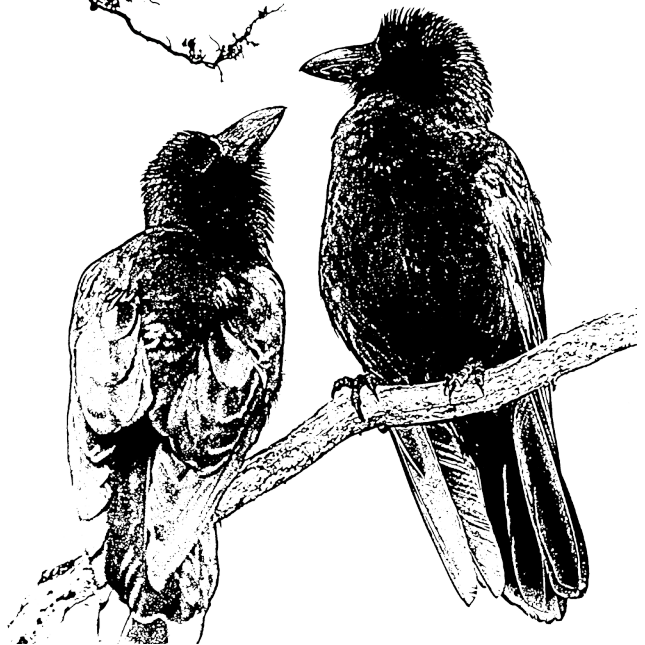
Alalā



PROTECTING OUR WATERSHEDS TO MAINTAIN HAWAII'S SOURCE OF FRESH WATER



Alalā



PROTECTING OUR WATERSHEDS TO MAINTAIN HAWAII'S SOURCE OF FRESH WATER



MAINTAIN THE RAIN!

Support Hawai'i's Watershed Partnerships

PLACE
STAMP
HERE

Did you know that alalā is the last surviving native raven in Hawai'i?



MAINTAIN THE RAIN!

Support Hawai'i's Watershed Partnerships

PLACE
STAMP
HERE

Did you know that alalā is the last surviving native raven in Hawai'i?



'Apapane



PROTECTING OUR WATERSHEDS TO MAINTAIN HAWAII'S SOURCE OF FRESH WATER

'Apapane



PROTECTING OUR WATERSHEDS TO MAINTAIN HAWAII'S SOURCE OF FRESH WATER



MAINTAIN THE RAIN!

Support Hawai'i's Watershed Partnerships

PLACE
STAMP
HERE

Did you know 'apapane are the most abundant Hawaiian honeycreeper? They are often seen flying above the canopy in search of patches of flowering 'ōhi'a.



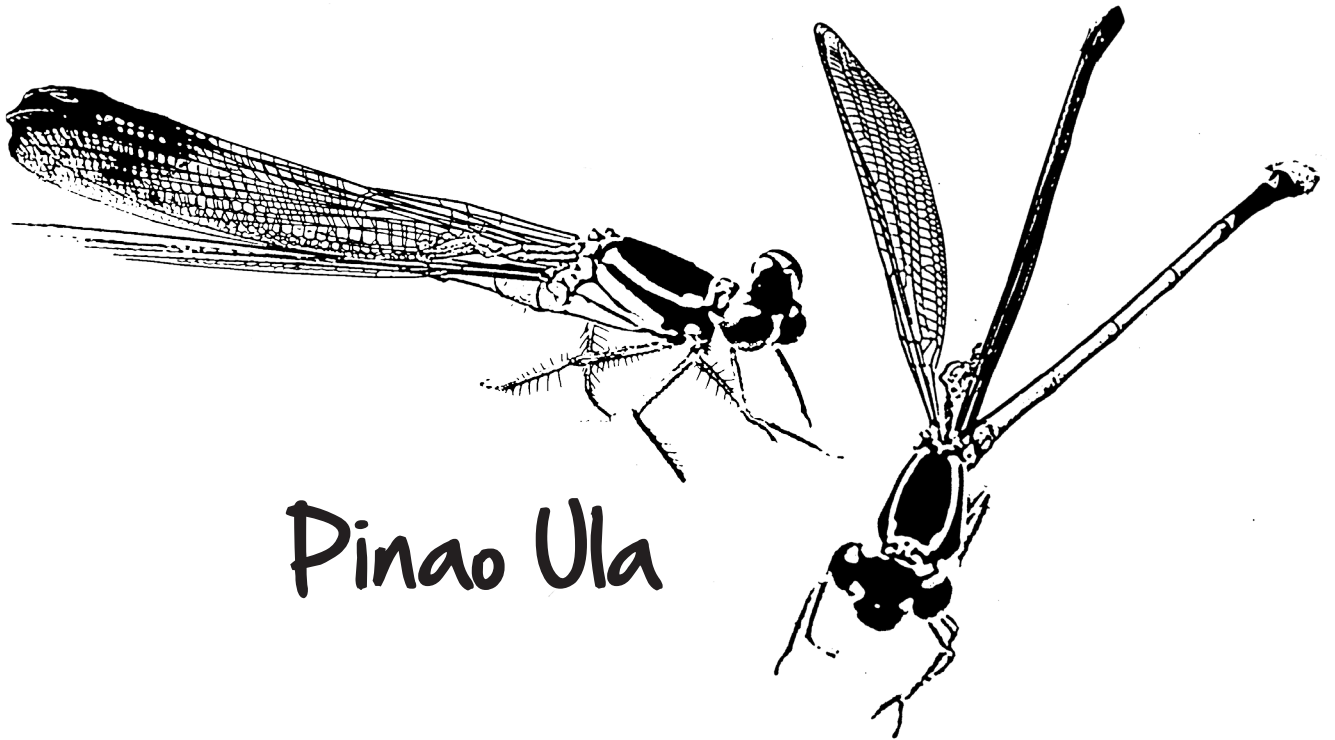
MAINTAIN THE RAIN!

Support Hawai'i's Watershed Partnerships

PLACE
STAMP
HERE

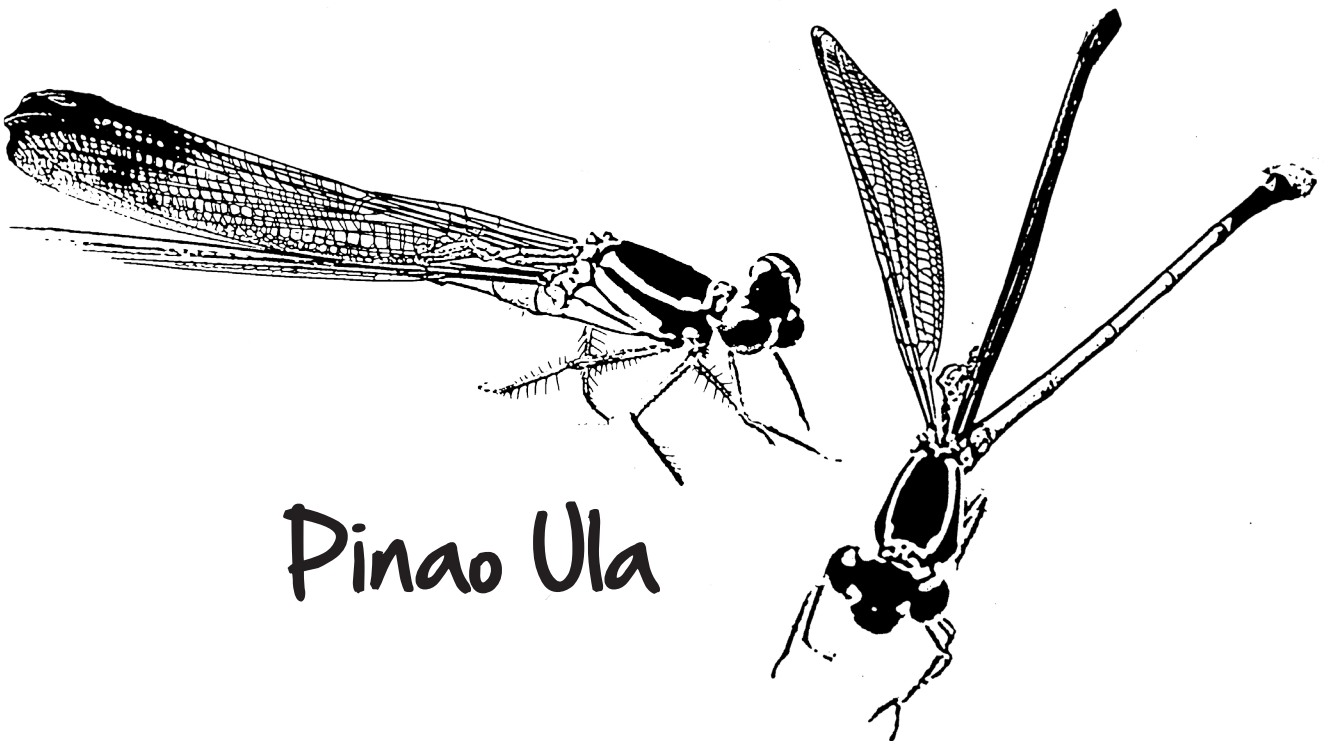
Did you know 'apapane are the most abundant Hawaiian honeycreeper? They are often seen flying above the canopy in search of patches of flowering 'ōhi'a.





Pinao Ula

PROTECTING OUR WATERSHEDS TO MAINTAIN HAWAII'S SOURCE OF FRESH WATER



Pinao Ula

PROTECTING OUR WATERSHEDS TO MAINTAIN HAWAII'S SOURCE OF FRESH WATER



MAINTAIN THE RAIN!

Support Hawai'i's Watershed Partnerships

PLACE
STAMP
HERE

Pinao ula are found along ponds, waterfalls, streams and niches in Hawaiian rainforests.

Did you know that the pinao ula use their spiny front legs to capture prey?



MAINTAIN THE RAIN!

Support Hawai'i's Watershed Partnerships

PLACE
STAMP
HERE

Pinao ula are found along ponds, waterfalls, streams and niches in Hawaiian rainforests.

Did you know that the pinao ula use their spiny front legs to capture prey?

